



FUJIATLAS®



SUZHOU FUJIATLAS ELEVATOR CO.,LTD

Tel: 86-512-58669001

E-mail: fujiatlas@163.com

Fax: 86-512-58669001

www.fujiatlas.com

No.2 Xingye Road, Jinfeng Town, Zhangjiagang City, Jiangsu Province, China



FUJIATLAS®

SUZHOU FUJIATLAS ELEVATOR CO.,LTD

— Take you to the next level —



COMPANY PROFILE

FUJI ATLAS is a professional manufacturer of escalator, travelator and elevators. We are a joint venture between China and Japan. We export thousands of lifts to more than 50 countries such as Qatar, Oman, UAE, Algeria, Tunisia, Azerbaijan, Colombia, Indonesia, Kenya, Tanzania, Georgia, Philippines and so on.

FUJI ATLAS products are good quality with CE and ISO certificate. FUJI ATLAS Produce passenger elevator, hospital elevator, cargo elevator, car elevator, panoramic elevator, escalator, travelator, dumbwaiter, screw lift, belt lift, L frame lift and so on. There are over 50 pcs fujiatlas agents all over the world.

Warmly welcome you to join the great family of fujiatlas.

FUJI ATLAS - TAKE YOU TO THE NEXT LEVEL

ADVANCED TECHNOLOGY



Elevator control system

As an indispensable mobile tool in urban space, the elevator reasonably distributes the passenger flow. In order to provide the passengers with the effective and convenient transport service etc., FUJI ATLAS applies the latest generation of VVVF frequency inverter to achieve the best speed regulation. Coupled with PLC logic processors, this forms a dual loop communication system. It forms speed and position closed-loop by the advanced rotary encoder. It furnishes the passengers with the perfect, effective and comfortable travel.



Permanent magnet synchronous and gearless traction machine

Mute: As it applies the imported high-precision bearing, and the motor rotating speed is very low, therefore it gets extremely low noise in machine room.
Energy-saving: Compared with the traditional geared traction machine, it saves about 40% of the energy.
Environmental protection: It needs no lubricating oil. Oil leakage does not exist. It is maintenance-free. It is good for environment-protection.
Effective: Total efficiency of comprehensive system is about 85%. Even under the condition of very big load, it gets almost constant efficiency.



Variable frequency synchronous VVVF automatic door machine

Toothed belt transmission — Low noise
 Overall upper-sill guide-rail — Light and handy structure
 3D adjustable installation — Easy installation
 Digitalized variable frequency — Low trouble rate



INTELLIGENT TECHNOLOGY



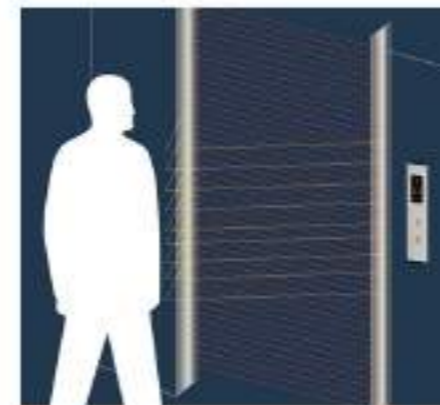
Air purifier sterilization and detoxification, odor removal, VOC

The ESP electrostatic module generates free electrons and ions, which charges particles and microorganisms in the air under the action of electric field forces. Particulate matter and microorganisms move to the opposite pole. It is adsorbed on the electrode plate and the electrode column, at the same time, 6000V high-voltage static electricity generates O_3 . In the electric field chamber, it maintains a constant and sufficient concentration to inactivate the virus germs with particulates as the carrier. At the same time, ozone is the best way to remove odor. The dam module catalyzes the decomposition of formaldehyde TVOC, reducing O_3 to O_2 . Clean air are sent into the space by the fan.



Face recognition system

The AI face recognition elevator display combines the human detection, the face tracking recognition and other functions. It has realized the identification and automatic call operation without contact with the elevator button, which is safe and efficient.



Light Curtain Protection

Sensitive and dense infrared light beams form a light curtain protection net at the elevator entrance, which can react sensitively to any person or object entering its detection position and greatly improve the safety performance.



Non-touch induction button

The new technology ensures sensitive induction, Providing abundant visual and non-touch experience. It can sense signals without finger touch, which can effectively prevent bacteria. When a person approaches the induction area (the induction distance is 1mm), it detects and sends the corresponding signal, Which realizes the calling of elevator without touching buttons.

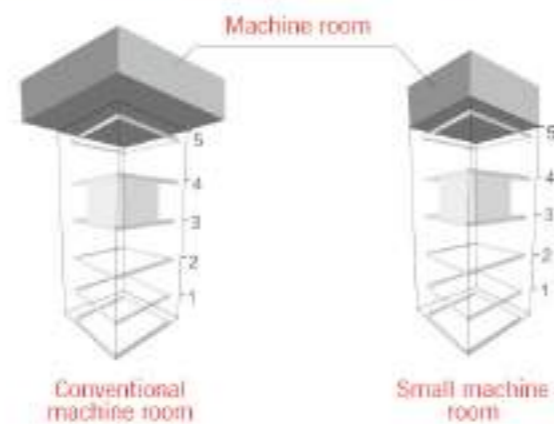
SMALL MACHINE ROOM PASSENGER ELEVATOR

FUJI ATLAS small machine room elevator can help saving space requirement and allow a better space utilization rate, thus making the building with a more appealing appearance. Its operation is flexible and reliable. The compact type permanent magnet synchronous machine and the tailor made controller cabinet can make the machine room area exactly same as that of the hoistway.



Saving up to 50% area of machine room

Machine room space is just an extension of the elevator hoistway. This makes the construction more convenient and with low energy consumption and cost. Compact gearless permanent magnet synchronous machine can provide more space for accommodating other control devices.

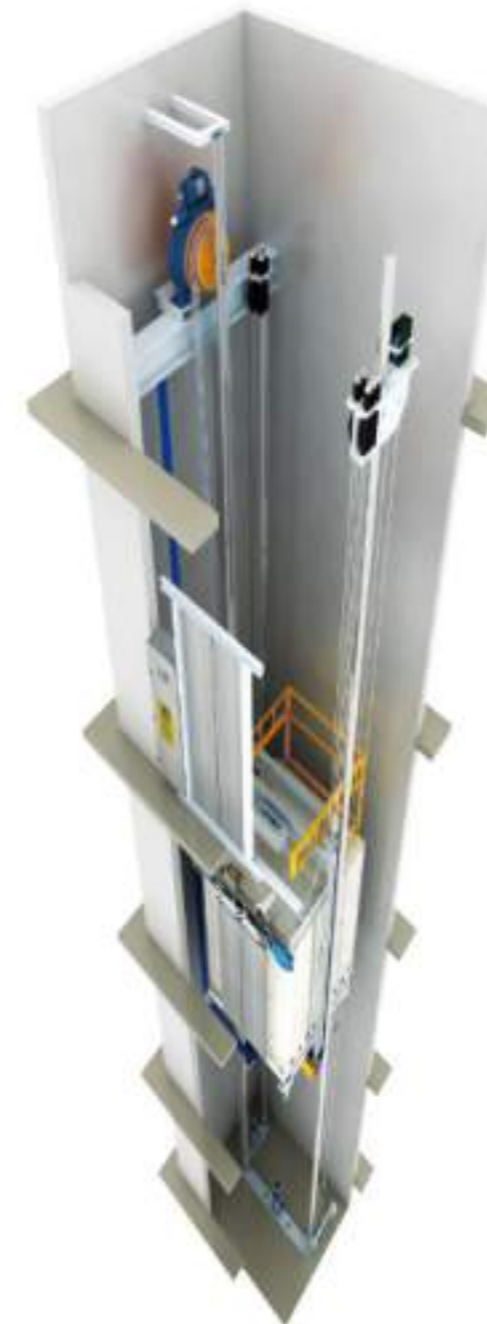


Saving up to 40% energy

Using world class permanent magnet synchronous gearless traction machine, it effectively reduces the energy consumption by 40%. The machine is maintenance free.

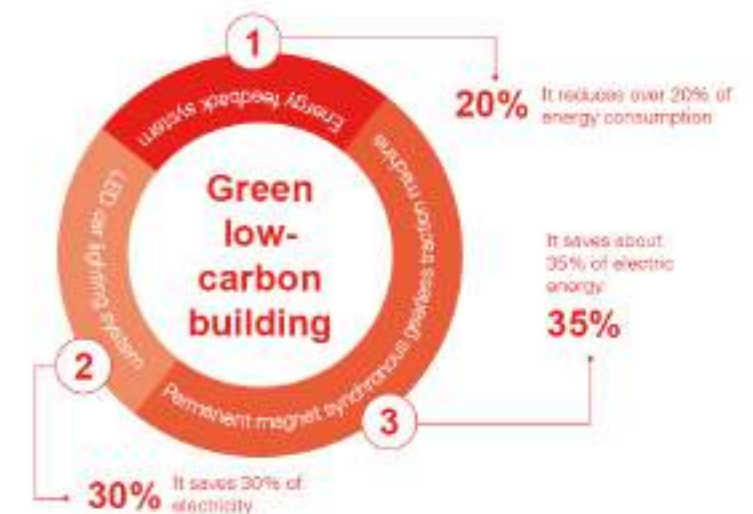
MACHINE ROOMLESS PASSENGER ELEVATOR

In order to know the concept of environmental protection, energy saving, saving building area, improve the degree of freedom in design is the responsibility of the FUJI ATLAS elevator without machine room, fully reflects the green spirit of humanity, the elevator needs only one independent well space, without room, with the same load weight level than conventional elevators, saving energy by 40%, save construction area of 10%.



Saving up to 10% area of construction

FUJI ATLAS machine roomless elevator saving even more space. The combined machine room with hoist-way give the elevator and construction designer more free-dom.



Passenger Elevator Optional Car Decoration

PASSENGER ELEVATOR STANDARD CAR DECORATION



FUJI-K101

Ceiling: Hairline Stainless Steel
Square LED Downlights
Car Wall: Hairline Stainless Steel
Floor: Monochromatic PVC



300° Panoramic display of carriage



FUJI-K102

Ceiling: powder coated steel panel + acrylic + downlights
Car rear wall: hairline stainless steel + mirror etching stainless steel
Car side wall: hairline stainless steel + mirror etching stainless steel
Car front wall: hairline stainless steel
Handrail: hairline stainless steel round
Floor: PVC



300° Panoramic display of carriage

FUJI-K103

Ceiling: Mirror stainless steel frame with acrylic craft board
Cabin: Hairline stainless steel, Mirror etching stainless steel
Handrail: Hairline stainless steel flat handrail
Floor: PVC



300° Panoramic display of carriage



Passenger Elevator Optional Car Decoration



FUJI-K104

Ceiling: Stainless steel mirror surface match with white transparent plate.
 Car Side and Car Back: Center board is made of Mirror finish, Etching Finish, Hairline Finish, Auxiliary Board is made of Hairline Finish.
 Handrail: Stainless steel tube
 Floor: PVC



FUJI-K105

Ceiling: Mirror stainless steel frame with acrylic craft board+ LED Spotlight
 Cabin: Mirror etching stainless steel
 Floor: PVC



Passenger Elevator Optional Car Decoration



FUJI-K106

Ceiling: Hairline stainless steel frame, acrylic arched lighting
 Car wall: Hairline stainless steel, Mirror etching stainless steel
 Handrail: Stainless steel single tube
 Floor: PVC



FUJI-K107

Ceiling: Wide format arched with white organic plate, subdued lighting.
 Car Side and Car Back: Center board is made of Mirror finish, Etching Finish, Hairline Finish, Concave in Golden.
 Auxiliary Board is made of Hairline Finish.
 Handrail: Transparent organic plate
 Floor: 2mm thickness PVC floor of marble vein



Passenger Elevator Optional Car Decoration



FUJI-K108

Ceiling: Mirror ST.ST. + Acrylic+ LED Lighting
 Rear Wall: Black Ti ST. ST. + Mirror ST.ST. Etching
 Side Wall: Black Ti ST. ST. + Mirror ST.ST. Etching
 Handrail: Brushed ST.ST.
 Skirting: Hairline ST. ST.
 Floor: Standard PVC floor (optional marble parquet)
 Front Wall: Black Mirror ST,ST.



3D7 Parameters
 display of carriage



FUJI-K109

Ceiling: ST.ST. frame with miky white acrylic lighting deco two sides, middle panel: mirror,etching.
 Floor: PVC



3D7 Parameters
 display of carriage

Passenger Elevator Optional Car Decoration



FUJI-K110

Ceiling: Titanium stainless steel+Acrylic+ LED Lighting
 Car Wall: Titanium ST. ST. + Titanium Mirror ST.ST.
 Handrail: Titanium three pipes handrail
 Floor: PVC



3D7 Parameters
 display of carriage



FUJI-K111

Ceiling: Rose-gold Mirror ST.ST. + Acrylic
 Rear Wall: Rose-gold Hairline ST. ST. + Rose-gold Mirror ST.ST.
 Side Wall: Rose-gold Hairline ST. ST. + Rose-gold Mirror ST.ST.
 Front Wall: Rose-gold Hairline ST. ST.
 Handrail: Rose Gold Round ST.ST. Tube
 Floor: PVC



3D7 Parameters
 display of carriage

Passenger Elevator Optional Car Decoration



FUJI-K112

Ceiling: titanium gold mirror stainless steel + acrylic
 Car rear wall: titanium gold etching stainless steel + titanium gold mirror etching stainless steel
 Car side wall: titanium gold etching stainless steel + titanium gold mirror etching stainless steel
 Car front wall: titanium gold stainless steel
 Handrail: titanium gold stainless steel + wood
 Floor: PVC



FUJI-K113

Ceiling: titanium gold mirror stainless steel + acrylic + downlights
 Car rear wall: titanium gold mirror etching stainless steel + titanium gold mirror stainless steel
 Car side wall: titanium gold mirror etching stainless steel + titanium gold mirror stainless steel
 Car front wall: titanium gold mirror stainless steel
 Handrail: titanium gold stainless steel + wood
 Floor: PVC



Passenger Elevator Optional Car Decoration



FUJI-K114

Ceiling: Titanium Mirror stainless steel
 Car Wall: Titanium ST. ST. + Titanium Mirror ST.ST.
 Handrail: Titanium three pipes handrail
 Floor: PVC



FUJI-K115

Ceiling: Titanium stainless steel + acrylic + Spotlight
 Car walls: Titanium stainless steel + Intermediate wall mirror stainless steel
 Handrail: Mirror stainless steel single tube (optional)
 Floor: Super wear-resistant parquet PVC flooring (standard)
 Marble parquet flooring (optional)



PANORAMIC ELEVATOR

Designed by Fuji, the panoramic elevator allows passengers to enjoy the surrounding cityscape, and its unique design allows one to taste city life from a special perspective. It adopts VVVF inverter driven energy-saving configuration, quiet movement, bring you a calm and comfortable riding experience, unique style and appearance as well as humanized fashion interface, enhance the architectural atmosphere, making this series become one of Fuji's models in elevator design and technology.

More comfort

VVVF variable frequency drive, more energy saved and comfortable

High cost performance

Ordinary investment, a hundred times the value.

Charming sight

The rich decoration features is matching with the various architectural environment.

Future orientation of elevator energy conservation

The new generation of permanent magnet synchronous gearless traction machine

It can greatly reduce the construction cost, save the cost for the construction and operation of the elevator, save energy, save space, and protect the environment. According to Fujielevator, a new generation of permanent magnet synchronous gearless traction machine has been successfully developed, which has the leading core technology in the industry and has high requirements for elevator maintenance and environmental protection.

Door machine control system

The door control system adopts double control system, one set of control cabinet main controller, another is controlled by another set of car board, which greatly reduces the phenomenon that the elevator goes out due to the failure of the door operator.

Highly integrated intellectual control system

It increases data processing speed with the more perfect functions and the more accurate car shift.



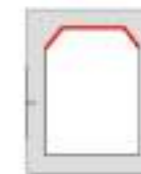
There is a variety of forms to meet different needs.



Semi-circular type



Square type



Octagonal type



Future prospects

Panoramic Elevator Optional Car Decoration



FUJI-G201

Ceiling: titanium gold mirror stainless steel + acrylic
 Car rear wall: titanium gold etching stainless steel + titanium gold mirror etching stainless steel
 Car side wall: titanium gold etching stainless steel + titanium gold mirror etching stainless steel
 Car front wall: titanium gold stainless steel
 Handrail: titanium gold stainless steel + wood
 Floor: PVC



FUJI-G202

Upper and lower covers: simple upper and lower covers
 Ceiling: mirror stainless steel + acrylic + downlights
 Car rear wall: hairline stainless steel + laminated glass
 Car side wall: hairline stainless steel + laminated glass
 Car front wall: hairline stainless steel
 Handrail: hairline stainless steel round
 Floor: PVC



Panoramic Elevator Optional Car Decoration



FUJI-G203

Upper and lower covers: hairline stainless steel etching metal spraying sand
 Ceiling: powder coated steel + acrylic + LED downlights
 Car rear wall: hairline stainless steel + laminated glass
 Car side wall: hairline stainless steel
 Car front wall: hairline stainless steel
 Handrail: hairline stainless steel round triplex
 Floor: PVC



FUJI-G204

Upper and lower covers: titanium golden mirror stainless steel
 Ceiling: titanium gold mirror stainless steel + acrylic + LED downlights
 Car rear wall: titanium gold mirror stainless steel + laminated glass
 Car side wall: titanium gold mirror stainless steel
 Car front wall: titanium gold mirror stainless steel
 Handrail: titanium gold mirror stainless steel round triplex
 Floor: PVC



Hospital Elevator Car Decoration



HOSPITAL ELEVATOR

In life-saving missions in hospital, modern medical centers, nursing homes, and other medical institutions, Fuji Hospital elevators help paramedics get their patients quickly to the necessary destinations, where every moment counts. We believe that providing patients with a fast and stable elevator experience is part of our responsibility. Fuji lifts are designed to support the needs of patients and physicians.



FUJI-DA01

FUJI-B401

- Ceiling: hairline stainless steel + acrylic + downlights
- Car wall: hairline stainless steel
- Car door: hairline stainless steel
- Handrail: hairline stainless steel flat
- Floor: PVC



QR* For more display of carriage

VILLA ELEVATOR

Fuji is committed to design and produce a kind of home elevator which can help people to improve the quality of their life with machine roomless innovative design, advanced technique and "never closed" commitment. At the same time with the most significant environmental energy efficiency. It can run only with 200v voltage with the same power consumption level as ordinary home appliances.



FUJI-V301

Ceiling: Mirror stainless steel with acrylic craft board+ LED Spotlight
 Car Wall: Wood, Mirror stainless steel
 Handrail: Gold mirror stainless steel
 Floor: PVC



3D Perspective display of carriage

Villa Elevator Optional Car Decoration



FUJI-V302

Ceiling: Mirror stainless steel with acrylic craft board+ LED Spotlight
 Car Wall: Wood, Mirror stainless steel
 Handrail: Gold mirror stainless steel
 Floor: PVC



3D Perspective display of carriage

FUJI-V303

Ceiling: Wood, mirror stainless steel
 Car Wall: Mirror stainless steel
 Handrail: black stainless steel
 Floor: PVC



3D Perspective display of carriage



Villa Elevator Optional Car Decoration



FUJI-V304

Ceiling: wood, mirror stainless steel, downlights
 Car Wall: wood, leather and black mirror
 Handrail: glass
 Floor: PVC



360° Panoramic display of carriage



FUJI-V305

Ceiling: titanium gold mirror stainless steel + acrylic + downlights
 Car rear wall: titanium gold mirror etching stainless steel + titanium gold mirror stainless steel
 Car side wall: titanium gold mirror etching stainless steel + titanium gold mirror stainless steel
 Car front wall: titanium gold mirror stainless steel
 Handrail: titanium gold stainless steel + wood
 Floor: PVC



360° Panoramic display of carriage

Villa Elevator Optional Car Decoration



FUJI-V306

Ceiling: Stainless steel fram+ acrylic + downlights
 Car Wall: Mirror ST. ST. + Wood
 Handrail: Wood+Stainless steel
 Floor: PVC



360° Panoramic display of carriage

FUJI-V307

Ceiling: baking finish wood(plain) + LED downlight + hidden lamp
 Car rear wall: teakwood finishes + decorative painting + mirror stainless steel plated in rose gold
 Car side wall: teakwood finishes + mirror stainless steel plated in rose gold
 Handrail: wood handrail
 Car front wall: mirror stainless steel plated in rose gold
 Floor: parquet stone
 Note: decorative painting effect is for reference only.



360° Panoramic display of carriage



CARGO ELEVATOR

FujiMRL Cargo elevator, is well versed in the concept of energy saving and consumption reduction, which not only saves the building area; but also improves the design freedom, fully reflecting the green and low-carbon. Compared with the machine room Cargo elevator of the same capacity level, it can save 25% of the power consumption and 10% of the building area.



Cargo Elevator Car Decoration



FUJI-H501

Integrated ceiling: hairline stainless steel +
downlights
Car wall: hairline stainless steel
Car door: hairline stainless steel
Floor: checkered plate



3D Parametric
display of carriage

Car Elevator Car Decoration



CAR ELEVATOR

Based on the car spacing and required performance characteristics, Fuji computerized elevator car intelligent vehicle access control system and signal scheduling management system can provide a safe operation for the elevator cabin.



FUJI-C601

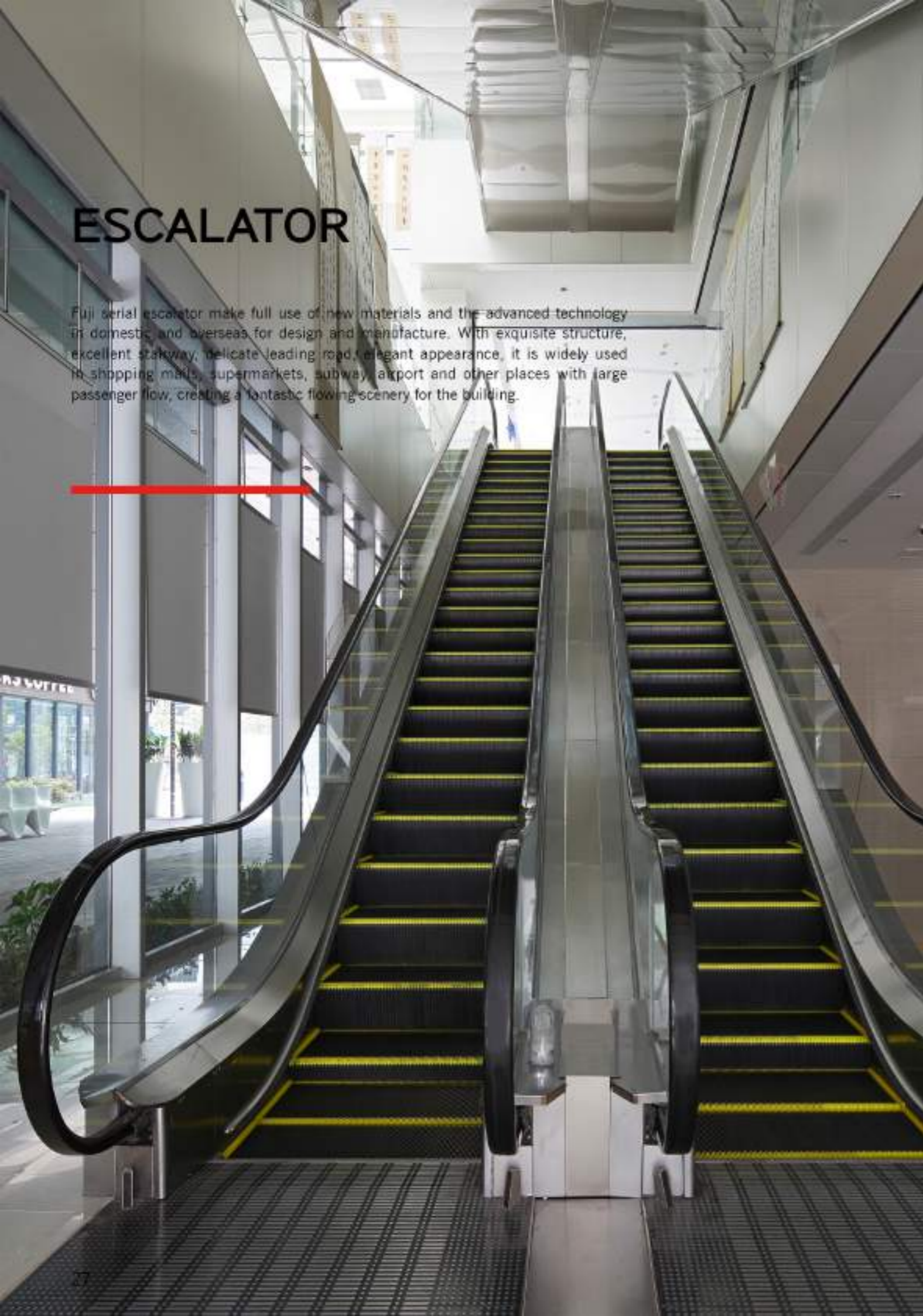
Integrated ceiling: powder coated steel panel+LED downlights
 Car wall: powder coated steel panel
 Car door: powder coated steel panel
 Floor: checkered plate



3D* Perspective
display of carriage

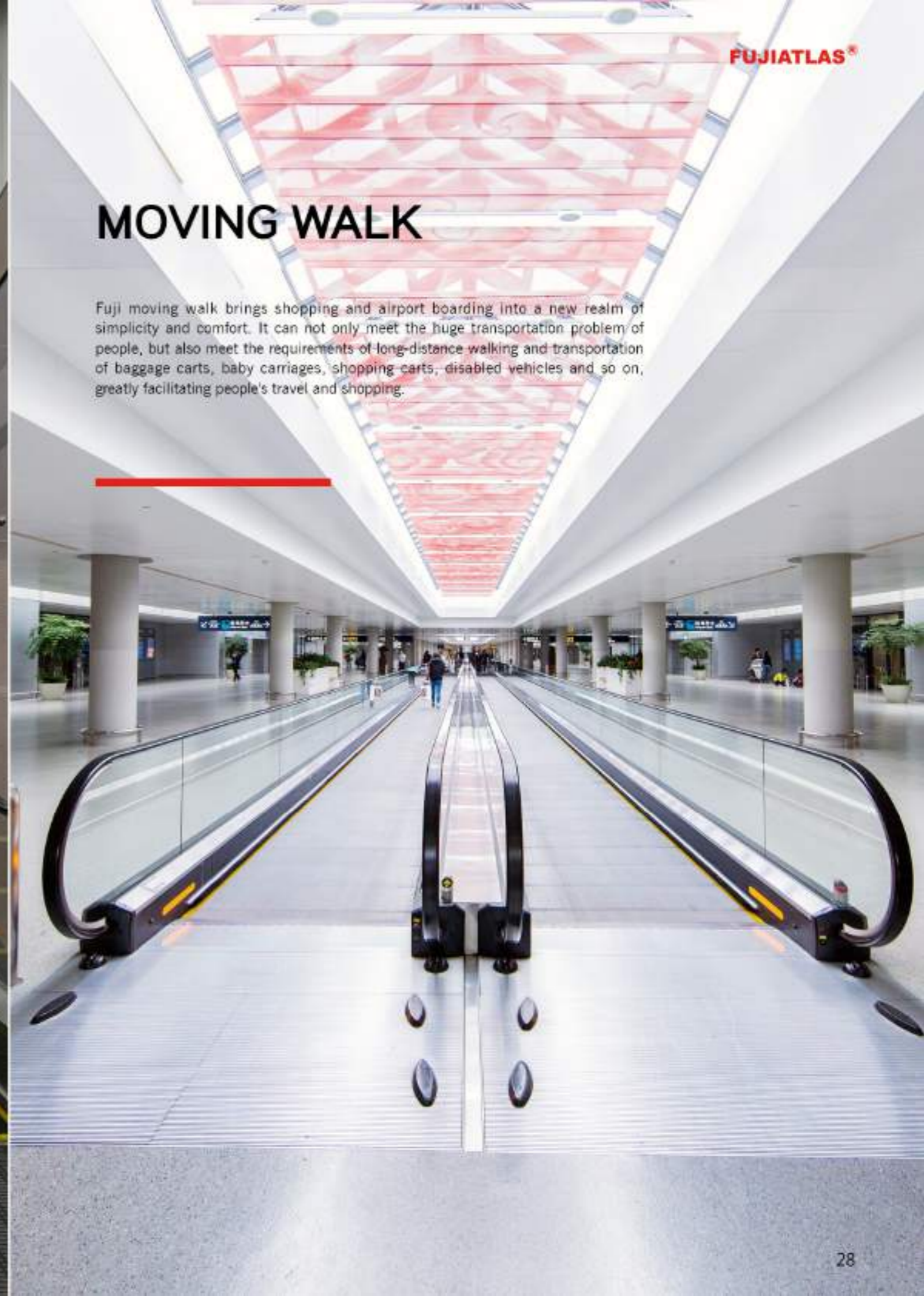
ESCALATOR

Fuji serial escalator make full use of new materials and the advanced technology in domestic and overseas for design and manufacture. With exquisite structure, excellent stakway, delicate leading road, elegant appearance, it is widely used in shopping malls, supermarkets, subway, airport and other places with large passenger flow, creating a fantastic flowing scenery for the building.



MOVING WALK

Fuji moving walk brings shopping and airport boarding into a new realm of simplicity and comfort. It can not only meet the huge transportation problem of people, but also meet the requirements of long-distance walking and transportation of baggage carts, baby carriages, shopping carts, disabled vehicles and so on, greatly facilitating people's travel and shopping.



Human interface-machine



DECORATION SERIES

Landing Door (optional)

Automatic door series



FUJI-M01
Landing door: hairline stainless steel
Jamb: hairline stainless steel



FUJI-M02
Landing door: mirror stainless steel
Jamb: mirror stainless steel



FUJI-M03
Landing door: mirror stainless steel + glass
Jamb: mirror stainless steel



FUJI-M04
Landing door: titanium etched stainless steel
Jamb: titanium stainless steel

Landing Door (optional)

Automatic door series



FUJI-M05
Hairline etched stainless steel



FUJI-M06
Hairline etched stainless steel



FUJI-M07
Hairline etched stainless steel



FUJI-M08
Hairline etched mirror stainless steel



FUJI-M09
Hairline etched mirror stainless steel



FUJI-M10
Hairline etched mirror stainless steel

DECORATION SERIES

Landing Door (optional)

Automatic door series



FUJI-M11
Titanium etched
mirror stainless steel



FUJI-M12
Titanium etched
mirror stainless steel



FUJI-M13
Titanium etched
mirror stainless steel



FUJI-M14
Titanium etched
mirror stainless steel



FUJI-M15
Titanium etched
mirror stainless steel



FUJI-M16
Titanium etched
mirror stainless steel

Landing Door (optional)

Automatic door series



FUJI-M17
Hairline etched
stainless steel



FUJI-M18
Black titanium
mirror stainless steel



FUJI-M19
Titanium etched
mirror stainless steel



FUJI-M20
Rose gold etched
mirror stainless steel



FUJI-M21
Champagne gold etched
mirror stainless steel



FUJI-M22
Bronzed etched
mirror stainless steel

DECORATION SERIES

Landing Door (optional)

Automatic door series



FUJI-M23
Mirror, hairline
stainless steel



FUJI-M24
Hairline etched
stainless steel



FUJI-M25
Rose gold
mirror stainless steel

Landing Door (optional)

Automatic door series



FUJI-M29
Titanium gold
mirror stainless steel



FUJI-M30
Black titanium
mirror stainless steel



FUJI-M31
Rose gold
mirror stainless steel



FUJI-M26
Champagne gold
hairline stainless steel



FUJI-M27
Titanium gold
mirror stainless steel



FUJI-M28
Titanium gold
mirror stainless steel

Manual door series



FUJI-M32
Dazzle-colored silver



FUJI-M33
Champagne gold



FUJI-M34
Black Walnut



FUJI-M35
Red wood

DECORATION SERIES

Ceiling (optional)



FUJI-D01

Sprayed steel plate frame, LED spotlight



FUJI-D02

Stainless steel frame, acrylic



FUJI-D09

Mirror ceiling, hairline border, acrylic lamp cup



FUJI-D10

Mirror stainless steel, downlight



FUJI-D03

Stainless steel frame, acrylic



FUJI-D04

Stainless steel frame, acrylic, LED spotlight



FUJI-D11

Stainless steel frame, acrylic vault, downlight



FUJI-D12

Hairline stainless steel frame, acrylic, LED spotlight



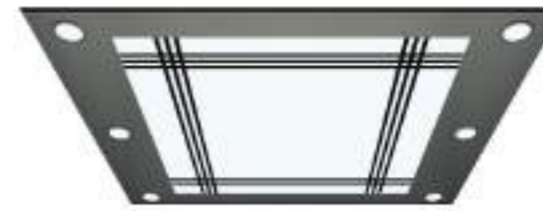
FUJI-D05

Stainless steel frame, acrylic, LED spotlight



FUJI-D06

Stainless steel frame, acrylic, LED spotlight



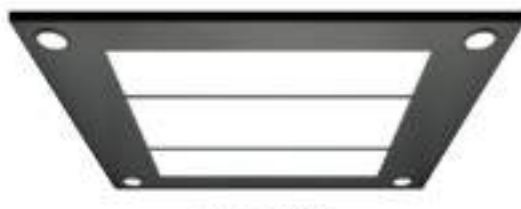
FUJI-D13

Hairline stainless steel frame, acrylic, LED spotlight



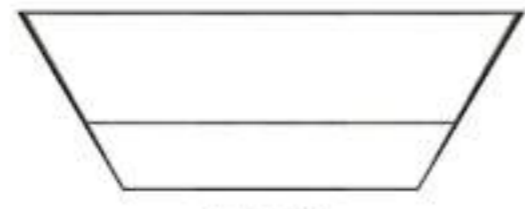
FUJI-D14

Stainless steel frame, acrylic



FUJI-D07

Hairline stainless steel frame, acrylic, LED spotlight



FUJI-D08

Stainless steel frame, acrylic



FUJI-D15

Ti-plated stainless steel frame with acrylic top panel, downlights



FUJI-D16

Ti-plated stainless steel frame with acrylic top panel, checked

DECORATION SERIES

Floor (optional)



FUJI-B01



FUJI-B02



FUJI-B03



FUJI-B04



FUJI-B05



FUJI-B06



FUJI-B07



FUJI-B08



FUJI-B09



FUJI-B10



FUJI-B11



FUJI-B12



FUJI-B13



FUJI-B14



FUJI-B15

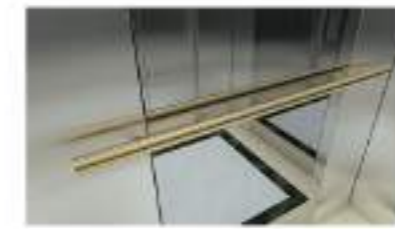


FUJI-B16

Handrail (optional)



FUJI-F01
Hairline stainless steel mono-tube



FUJI-F02
Titanium gold mirror stainless steel mono-tube



FUJI-F03
Hairline stainless steel double-tube



FUJI-F04
Titanium gold mirror stainless steel double-tube



FUJI-F05
Hairline stainless steel tri-tube



FUJI-F06
Titanium gold mirror stainless steel tri-tube



FUJI-F07
Hairline stainless plate, square handrail



FUJI-F08
Titanium gold plate, square handrail



FUJI-F09
short grain stainless steel, arc head



FUJI-F10
short grain titanium gold stainless steel, arc head

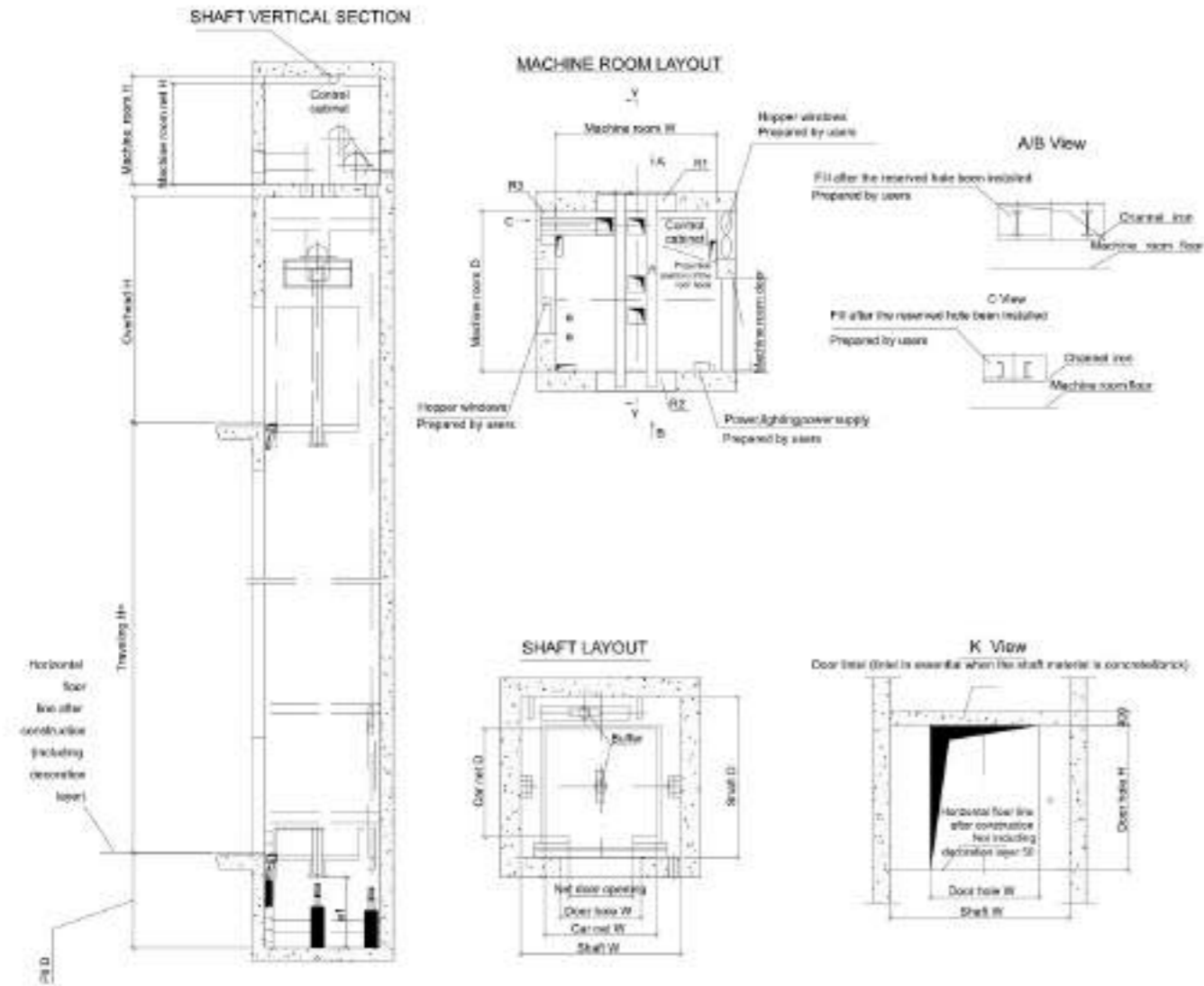


FUJI-F11
Combination of stainless steel and titanium gold



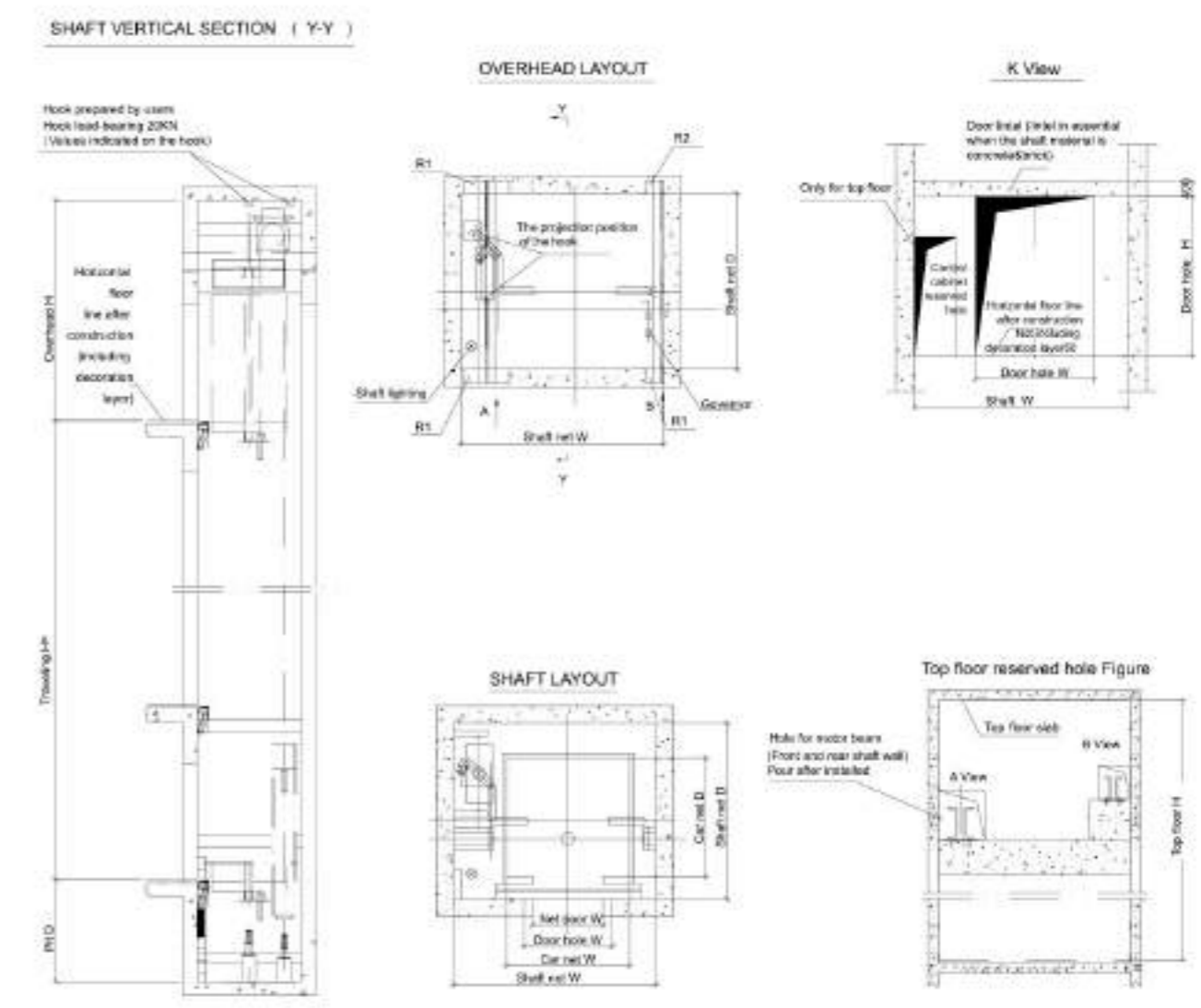
FUJI-F12
Combination of round wood and titanium gold

SMALL MACHINE ROOM PASSENGER ELEVATOR CONSTRUCTION PARAMETERS



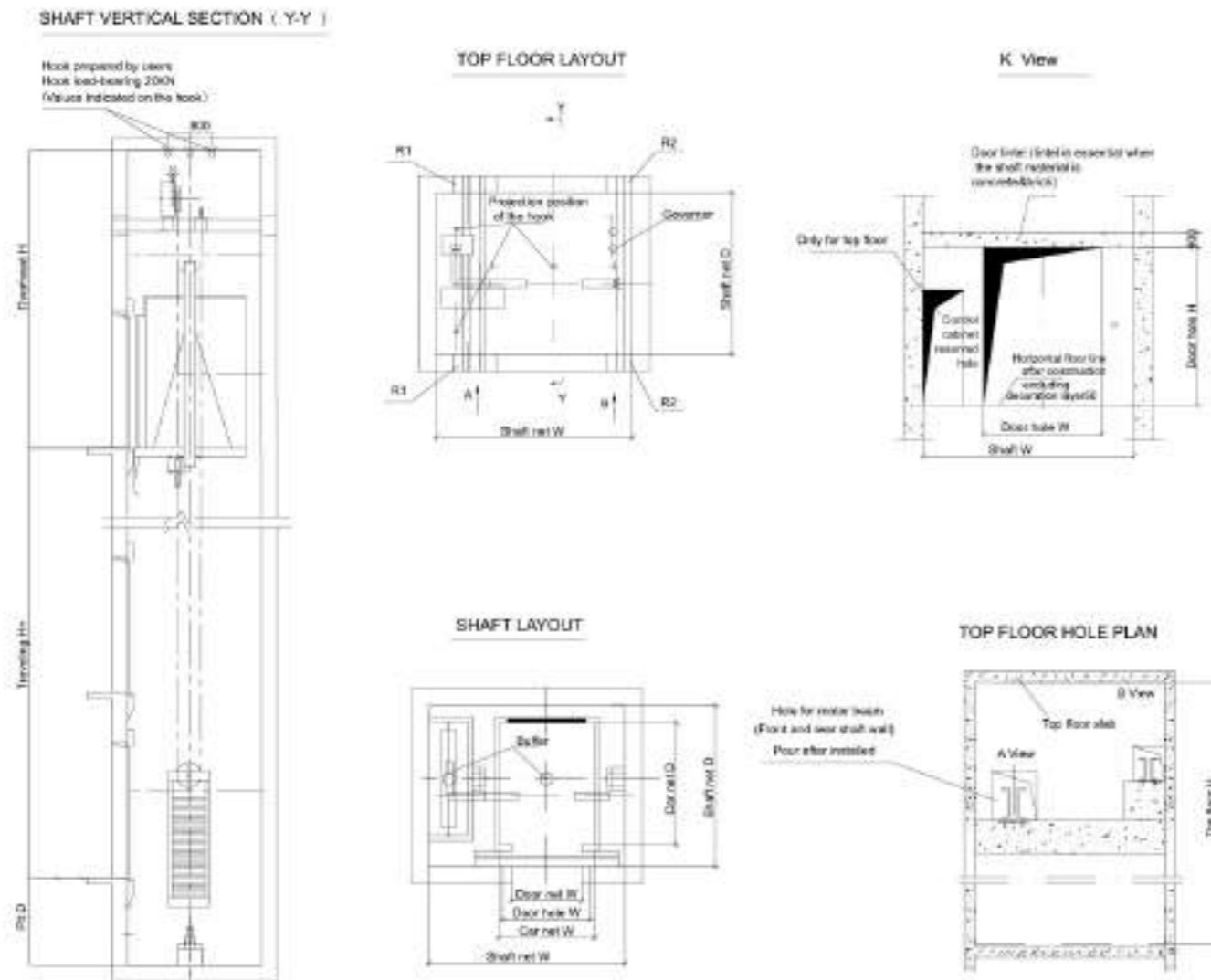
Capacity (kg)	Speed (m/s)	Car Size (mm)	Door Size (mm)	Door Type	Standard Shaft Size (mm)	Pit (mm)	OH (mm)
450	1	1200x1100	700x2100	Center	1650x1700	1500	4500
	1.5						
630	1	1400x1200	800x2100	Center	1850x1800		
	1.5						
800	1	1400x1350	800x2100	Center	1900x1950		
	1.5						
1000	1	1600x1400	900x2100	Center	2100x2000		
	1.5						
1150	1	1800x1400	1000x2100	Center	2300x2100		
	1.5						
1250	1	1900x1500	1100x2100	Center	2400x2200		
	1.5						
1350	1	1900x1600	1100x2100	Center	2400x2300		
	1.5						
1600	1	2000x1700	1100x2100	Center	2500x2400		
	1.5						

MACHINE ROOMLESS PASSENGER ELEVATOR CONSTRUCTION PARAMETERS



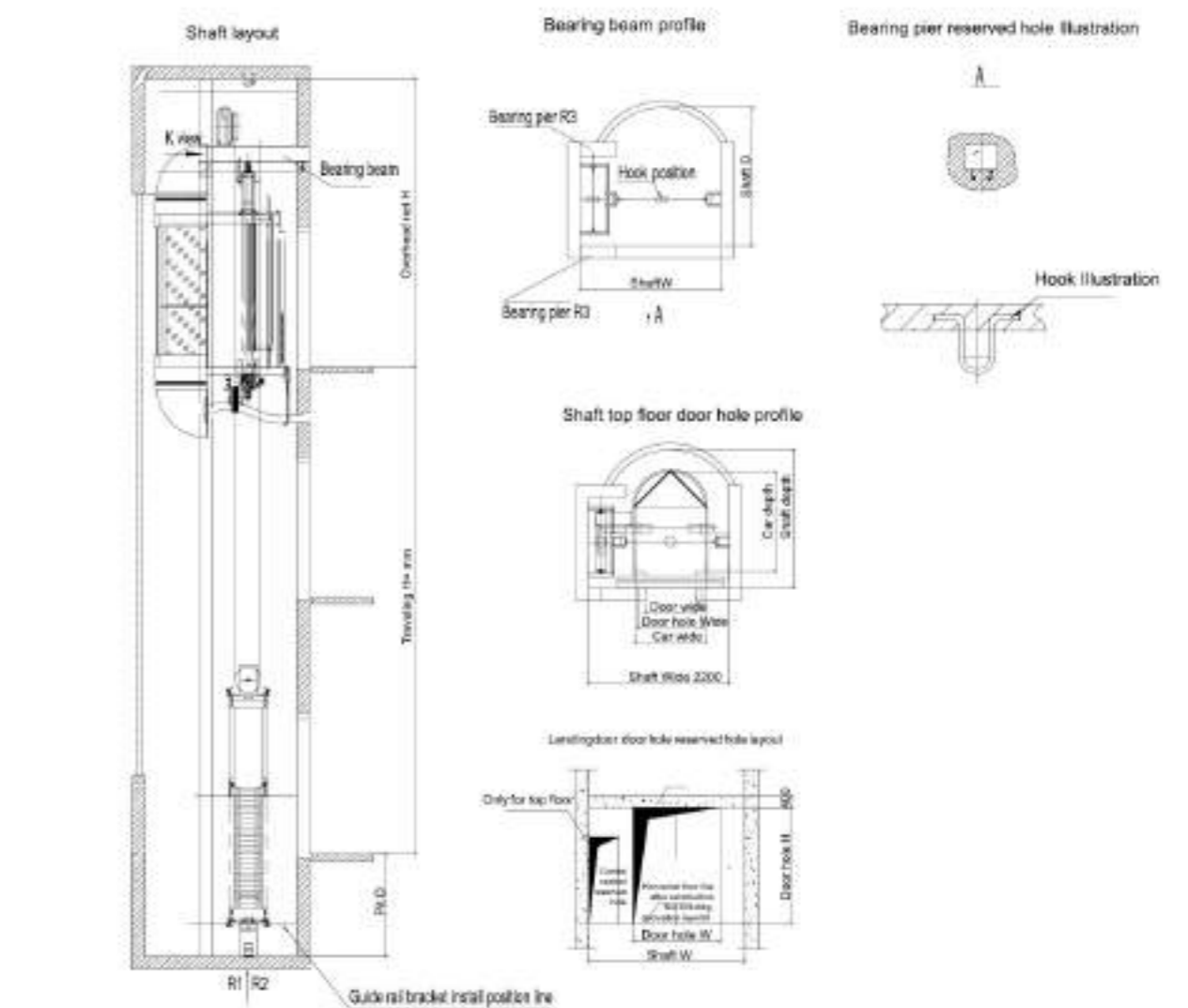
Capacity (kg)	Speed (m/s)	Car Size (mm)	Door Size (mm)	Door Type	Standard Shaft Size (mm)	Pit (mm)	OH (mm)
450	1	1200x1100	700x2100	Center	1650x1700	1500	4500
	1.5						
630	1	1400x1200	800x2100	Center	1850x1800		
	1.5						
800	1	1400x1350	800x2100	Center	1850x1950		
	1.5						
1000	1	1600x1400	900x2100	Center	2050x2000		
	1.5						
1150	1	1800x1400	1100x2100	Center	2700x1800		
	1.5						
1250	1	1900x1500	1100x2100	Center	2600x1900		
	1.5						
1350	1	1900x1600	1100x2100	Center	2600x2000		
	1.5						
1600	1	2000x1600	1100x2100	Center	2900x2200		
	1.5						

SQUARE PANORAMIC ELEVATOR CONSTRUCTION PARAMETERS



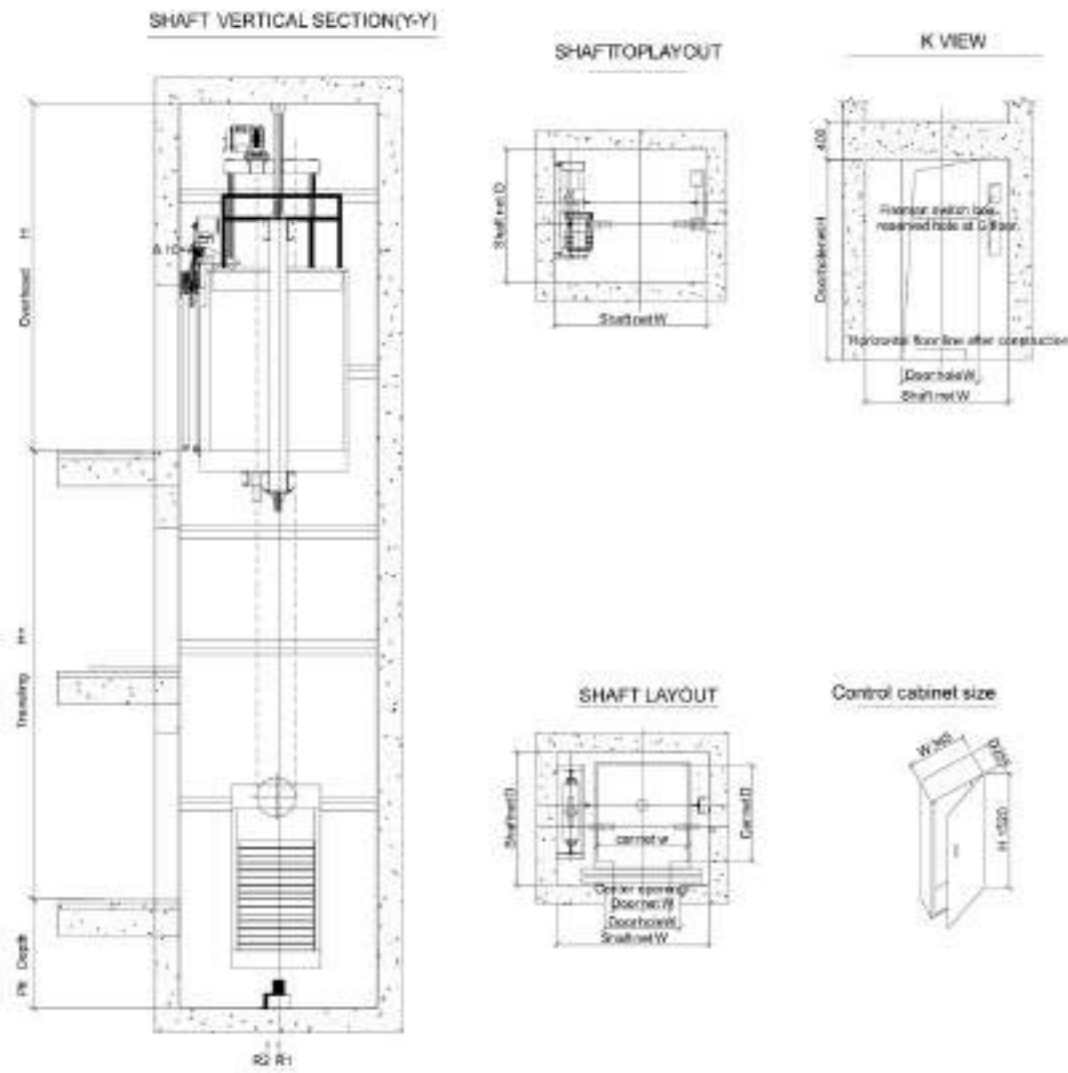
Capacity (kg)	Speed (m/s)	Car Size (mm)	Door Size (mm)	Door Type	Standard Shaft Size (mm)	Pit (mm)	OH (mm)
630	1	1100x1400	700x2100	Center	2000x2000	1500	4500
	1.5						
	1.75						
900	1	1300x1500	800x2100	Center	2200x2100		
	1.5						
	1.75						
1000	1	1500x1500	900x2100	Center	2400x2100		
	1.5						
	1.75						
1250	1	1600x1700	1000x2100	Center	2500x2300		
	1.5						
	1.75						
1350	1	1800x1700	1100x2100	Center	2700x2300		
	1.5						
	1.75						
1600	1	1900x1800	1100x2100	Center	2900x2400		
	1.5						
	1.75						

SEMICIRCLE PANORAMIC ELEVATOR CONSTRUCTION PARAMETERS



Capacity (kg)	Speed (m/s)	Car Size (mm)	Door Size (mm)	Door Type	Standard Shaft Size (mm)	Pit (mm)	OH (mm)
630	1	1100x1600	700x2100	Center	2000x2200	1500	4500
	1.5						
	1.75						
800	1	1200x1750	800x2100	Center	2100x2350		
	1.5						
	1.75						
1000	1	1300x1900	900x2100	Center	2200x2500		
	1.5						
	1.75						
1250	1	1500x2000	1000x2100	Center	2400x2600		
	1.5						
	1.75						
1600	1	1800x2100	1000x2100	Center	2600x2700		
	1.5						
	1.75						
1600	1	1900x1800	1100x2100	Center	2900x2400		
	1.5						
	1.75						

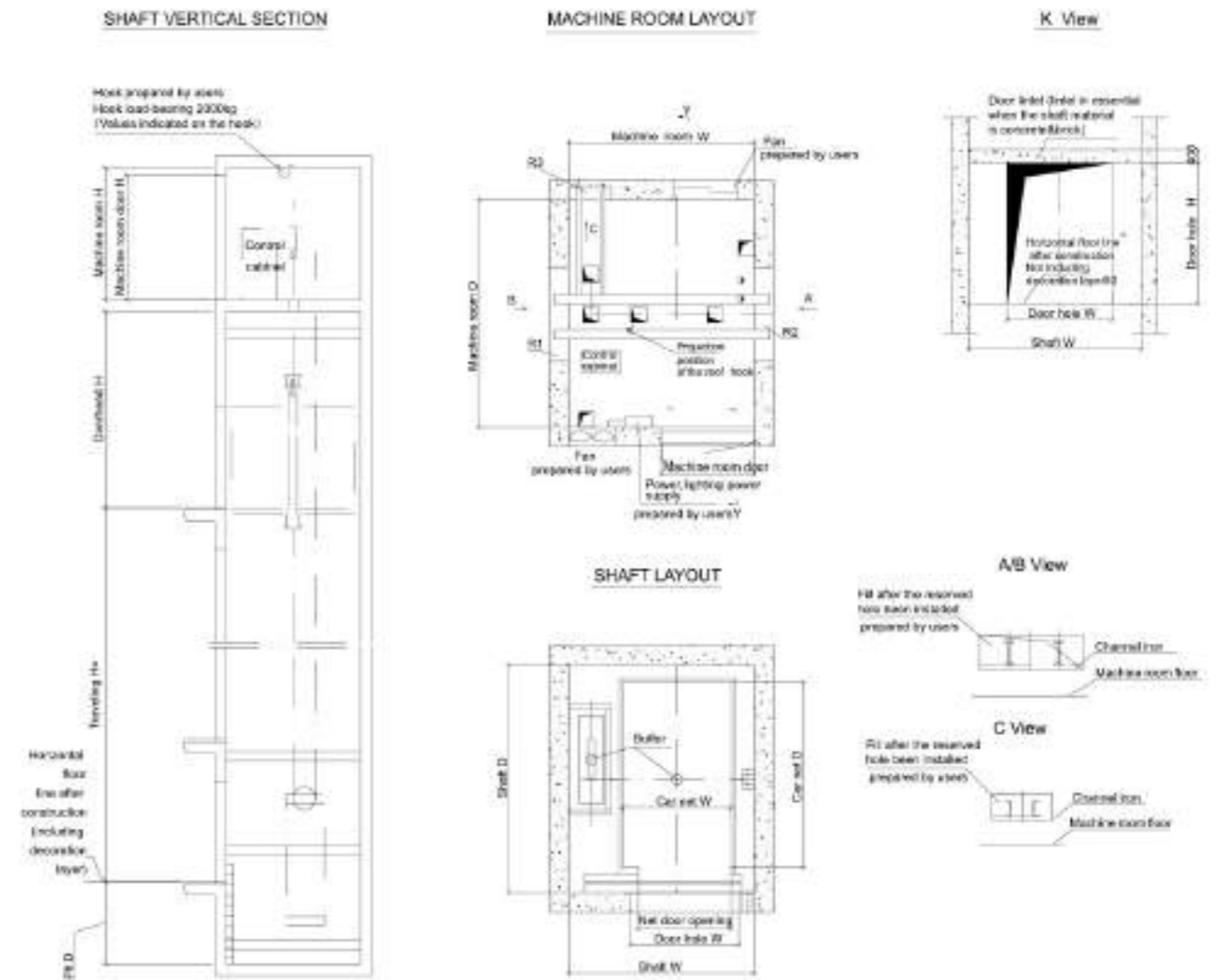
VILLA ELEVATOR CONSTRUCTION PARAMETERS



Note: This layout only for construction reference, not for installation drawing.

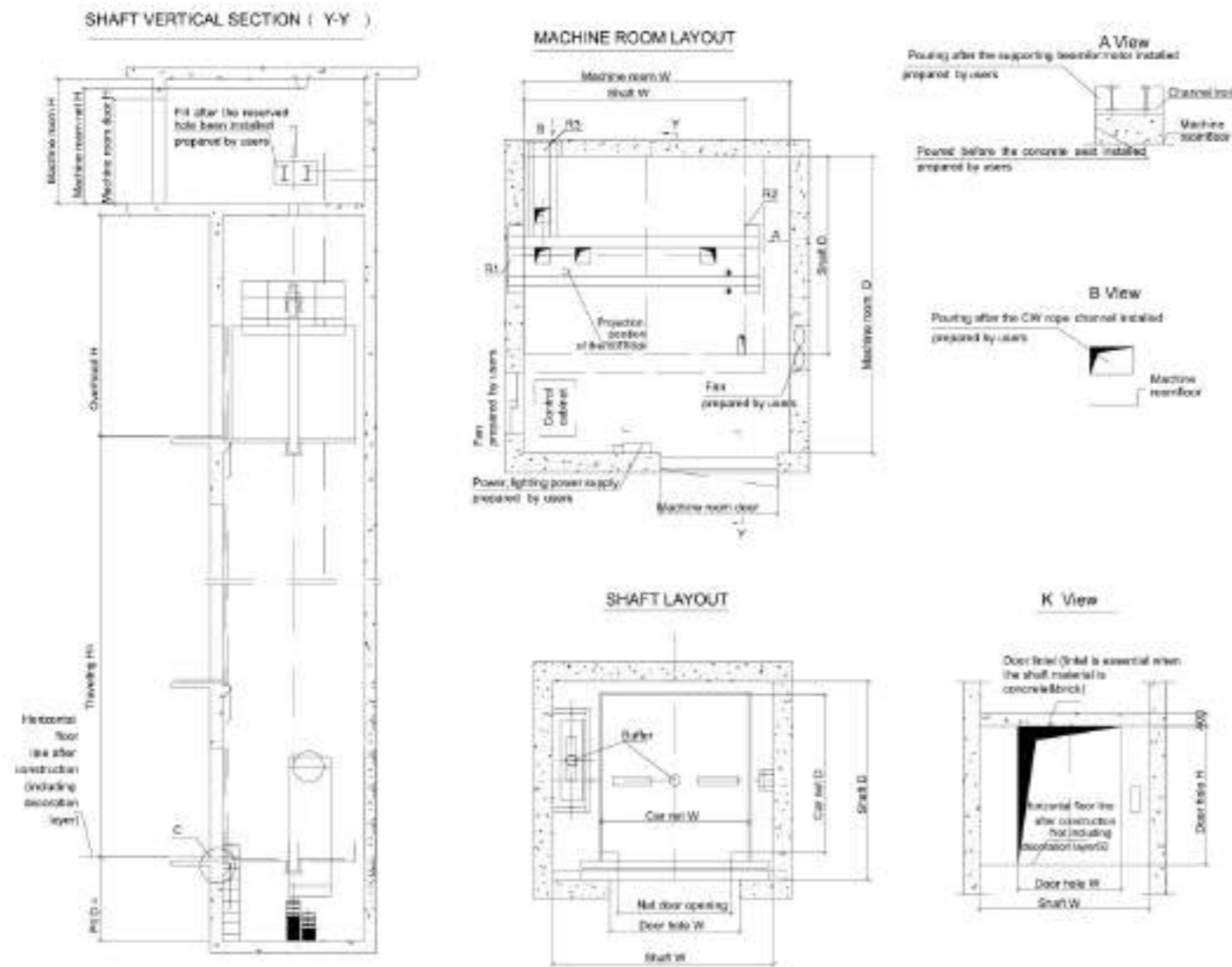
Capacity (kg)	Speed (m/s)	Car Size (mm)	Door Size (mm)	Door Type	Standard Shaft Size (mm)	Pit (mm)	OH (mm)
200	0.4	750x900	700x2000	Side	1300x1200	500	3000
320	0.4	900x1200	800x2000	Side	1500x1500		
400	0.4	1000x1200	700x2000	Center	1600x1450		

HOSPITAL ELEVATOR CONSTRUCTION PARAMETERS



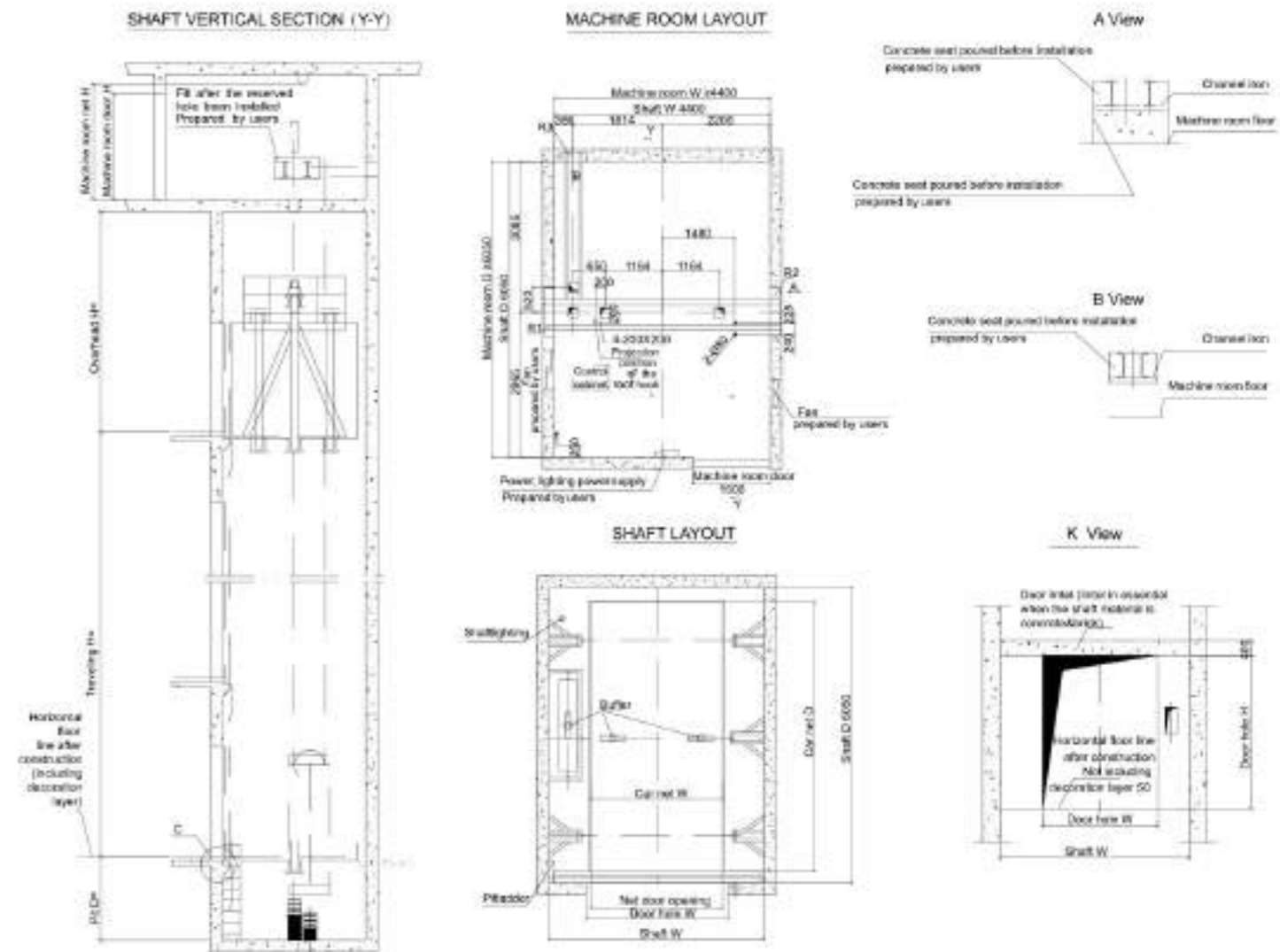
Capacity (kg)	Speed (m/s)	Car Size (mm)	Door Size (mm)	Door Type	Standard Shaft Size (mm)	Pit (mm)	OH (mm)
1600	1	1400x2400	1200x2100	Side	2300x2900	1500	4500
	1.5						
	1.75						
1600	1	1400x2400	1200x2100	2-Side	2300x3050		
	1.5						
	1.75						
1600	1	1400x2400	1200x2100	Center	2650x2800		
	1.5						
	1.75						
1600	1	1400x2400	1200x2100	2-Center	2650x2900		
	1.5						
	1.75						

CARGO ELEVATOR CONSTRUCTION PARAMETERS



Capacity (kg)	Speed (m/s)	Car Size (mm)	Door Size (mm)	Door Type	Standard Shaft Size (mm)	Pit (mm)	OH (mm)
1000	1	1400x1700	1400x2100	4-Center	2500x2250	1500	4500
	1.5						
2000	0.5	1700x2400	1700x2100	4-Center	3050x3000		
	1						
3000	0.5	2000x2800	2000x2100	4-Center	3500x3400		
4000	0.5	2200x3300	2200x2100	4-Center	3900x3900		

CAR ELEVATOR CONSTRUCTION PARAMETERS



Capacity (kg)	Speed (m/s)	Car Size (mm)	Door Size (mm)	Door Type	Standard Shaft Size (mm)	Pit (mm)	OH (mm)
3000	0.25	2500x6000	2500*2100	4-Center	4150x6600	1500	5000
	0.5						
4000	0.25	3000*6500	2600x2100	4-Center	4500*7100		
	0.5						
5000	0.25	3500*7000	2700*2100	4-Center	4800x7600		
	0.5						